

# DESIGNING OF MINES OSTRAVA Ltd.



# Báňské projekty Ostrava, a.s.

- **Company is based in Ostrava city, the hub of Ostrava – Karviná mining district.**
- **BPO gained its experiences in underground works and mine technologies within the Ostrava- Karviná Group of Mines.**
- **BPO a.s. provides complex project designs for underground and surface mines**
- **BPO covers all project stages from exploration to operation and eventual closing of mines**
- **Designs are processed mostly in AutoCad, Microstation, Carlson or Minex software**

# Báňské projekty Ostrava, a.s.

- **BPO keeps traditional contacts with Czech Mining Authorities, Ostrava Mining University and other institutions**
- **BPO is certified in ISO 9001- 2009 quality management standard**
- **BPO is constituent member of Czech Mining Technology Association**
- **Czech Mining Law requires that every mining designer has to be certified by Czech Mining Authority**
- **Some professions, e.g. designer of electrical appliances has to be certified according to particular regulations**

# Báňské projekty Ostrava, a.s.

- **Safety at work is a prerequisite for mining process.**
- **Designer has to observe and comply with all mining rules and instruction from the very beginning of mining intentions through all project stages.**
- **Mining engineering is very comprehensive issue where everything is interrelated**
- **Designer has to prepare plans in a way to avoid any danger or risk of accidents, i.e. proper way of opening of a mine, proper mining technology, sufficient ventilation, appropriate transport system etc.**

# Báňské projekty Ostrava, a.s.

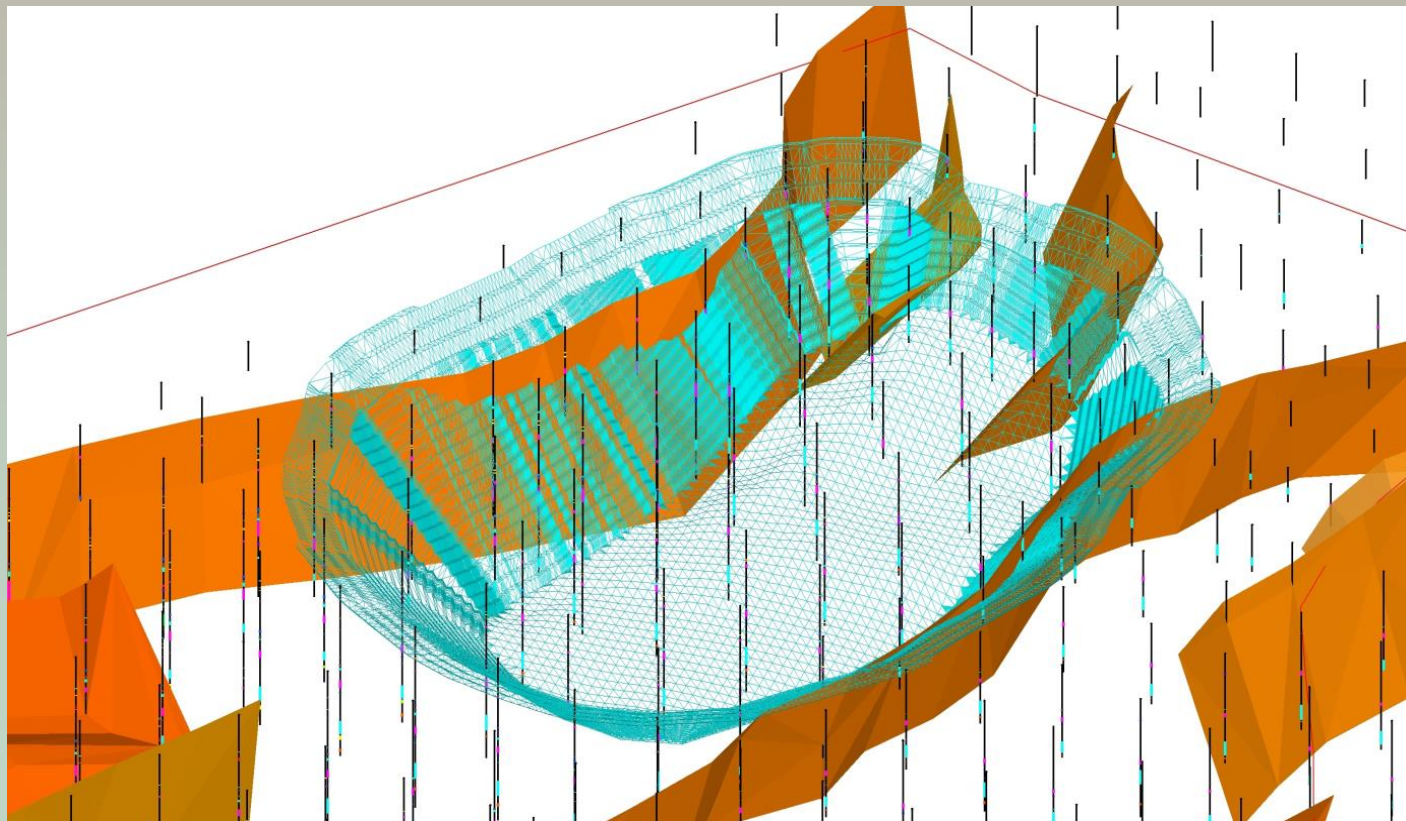
- **Mining regulations lay down detailed instructions on designing of all particular elements of a mine development and operation.**
- **Each project design has to include risk assessment**
- **Risk assessment has to include all hazards, namely:**
  - **mechanical**
  - **weak ground, caving**
  - **rock strikes**
  - **gases, outburst of coal and gas**
  - **coal dust, explosion protection**
  - **ground water**
  - **danger of self-combustion and fire protection**
  - **rescue plan**

# Báňské projekty Ostrava, a.s.

- **All these hazards exists within Ostrava – Karvina mines**
- **BPO designers are well trained how to protect our mines from these hazards**
- **This is integral part of our designing works**
- **Every project design must be based on proper knowledge of geological and mining conditions**
- **Understanding of local mining experiences and history is also very important.**
- **Mining is a matter of experience .**

# Báňské projekty Ostrava, a.s.

EREN Holding company – Kushmurun quarry 3D model



# CZECH EXTRACTION AND MINING TECHNOLOGY ASSOCIATION



## MEMBERS

