

MAT HELLAS VENTILATION DUCTING S.A.



MAT HELLAS



www.mathellas.com



Company Overview

MAT HELLAS VENTILATION DUCTING S.A is specializing in manufacturing and exporting various kinds of Flexible Ventilation Ducting, suitable for transporting fresh air into underground mines and tunnelling projects.

Having over than four decades of experience to draw on, and fully integrated manufacturing capabilities, we are well positioned to meet our customers' quality and service requirements.

MAT HELLAS is located in northwest Greece on its own premises of 1600 sq.m. The production is doing under high-technology special machinery and our production capability is over than 1.000 linear meters of ducting in any diameter per day. As a result, MAT HELLAS can cover any urgent demand from our customers according to the jobsite needs.

MAT HELLAS is a world leader, as the company has supplied ventilation systems to many tunnelling & mining projects through the world. MAT HELLAS has long established trustworthy business relations and cooperation with the bigger firms on these sectors to over than 40 countries worldwide.

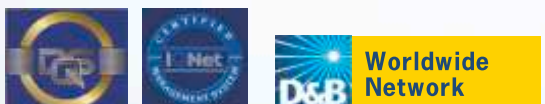
Quality Assurance

MAT HELLAS Flexible Ventilation Ducting Type AFR is certified with the EC-Type Examination Certificate according to European Directive 94/9/EC for "Equipment or Protective Systems intended for use in Potentially Explosive Atmospheres (ATEX)".

MAT HELLAS Flexible Ventilation Ducting Type AFR is conformed to the requirements of the European Standards: EN13463-1:2009, EN 1127-1:2007, EN1127-2+A1:2008, EN50303:2000, EN 15198:2007, CLC/TR50404:2003.

Due to the fact that the equipment's intended use is for mines and it remains functional even if the event of rare incidents relating to equipment with an explosive atmosphere is presenting, the equipment belongs to: GROUP I CATEGORY M1. Therefore on the products is affixed the **Ex** mark with the Group (I) and Category (M1) in which belongs.

MatHellas Quality System Administration is certified in accordance with the ISO9001:2015 and ISO14001:2015 by Certification Body DQS Hellas member of DQS-UL group and IQNET International Certification Network.



ISO9001:2015 CRN:493094 QM08
ISO14001:2015 CRN:493094 UM
Decide with Confidence
DQS D-U-N-S Number: 499967839



PRODUCTS

Features

Material (Ducting fabric)	Mathellas 750-AFR
Properties	Flame Retardant (FR), Antistatic (AFR)
Diameter	Ø 300 up to Ø 3000 (mm)
Section Length	15, 20, 25, 50, 100 (m) or other upon request
Included	Coupling system & Suspension system
Certification	ATEX Certified, according to 94/9/EC E.U. directive



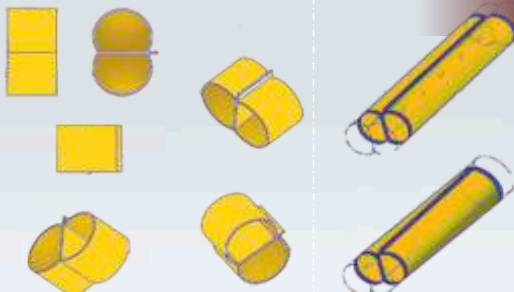
Normal Type

Positive Pressure Duct



Spiral Type

Negative Pressure Duct



Twin Type

Biduct



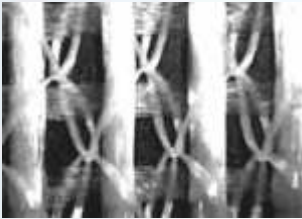
Special Items

Branches Y-type, T-type,
Bends, Reducer cones



Technical Characteristics

MAT HELLAS Ventilation Ducting is manufactured from PVC-coated knitted polyester fabric, is characterised by low weight and high strength, whilst at the same time it remains a very pliable and easy to handle duct. The ducting fabric type AFR has Antistatic and FR (Flame Retardant) properties.



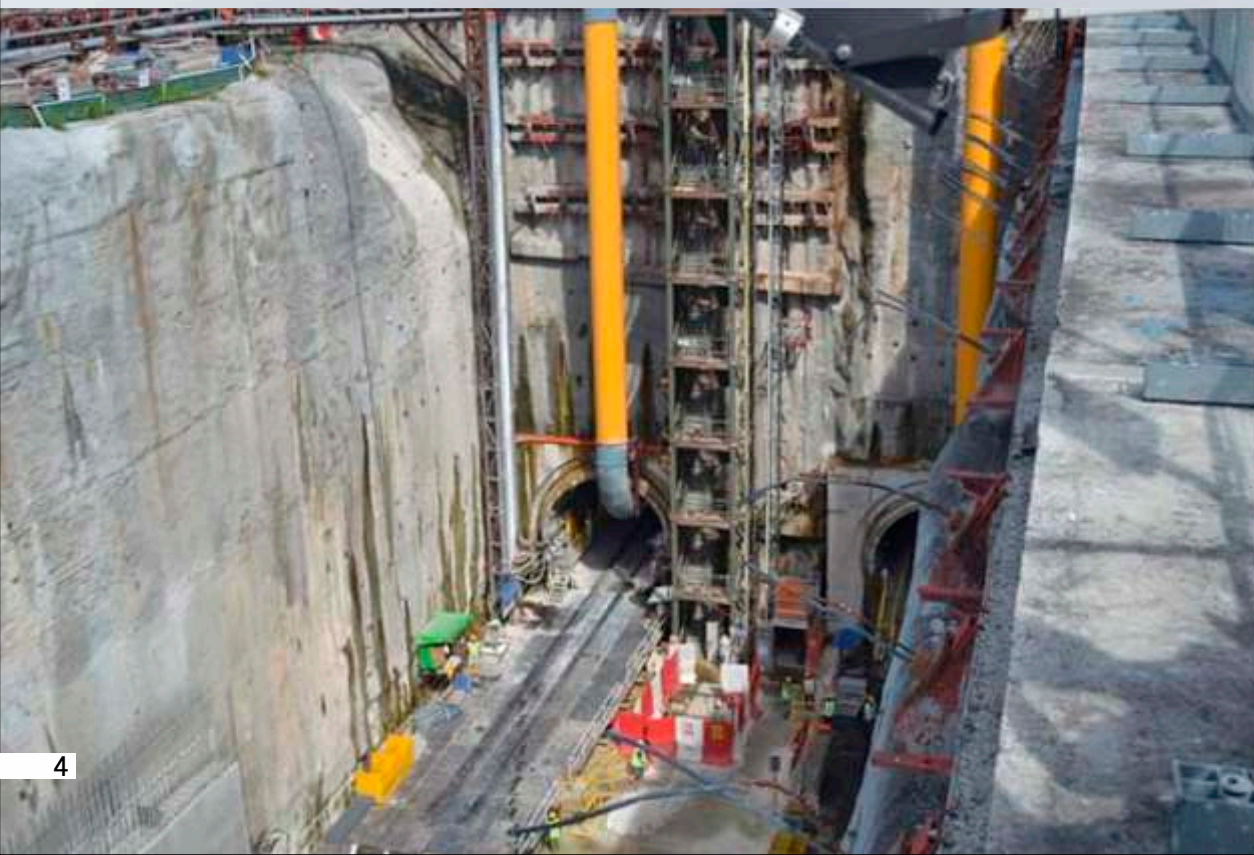
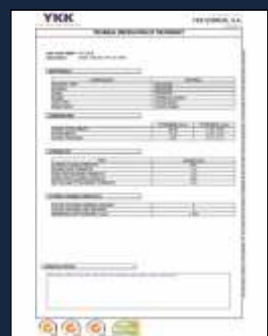
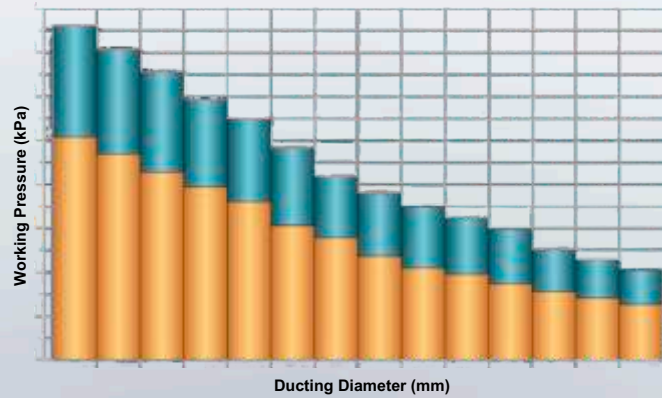
The specially developed knitted polyester yarn inside give at the duct the maximum high tear resistance and it prevents small holes and cracks from growing and causing the entire duct to tear.

The outside PVC-coating makes the duct airtight and watertight, protects the yarn against UV radiation and chemical effects of light, plus it makes it possible to weld the individual sheets together into a circular duct. The chemical composition of PVC-coating does not contain cadmium (Cd) or any other heavy metal content.

The technical characteristics of MatHellias vent-ducts meet the special requirements of each project. The quality of the fabric, the diameter of the duct, the section length, the coupling and the suspension system, are capable of being adapted to the needs of any underground work.

MATHELLAS ducting guarantee a proper aerodynamic design with reduced air pressure loss.

MAT HELLAS Ventilation Ducting Pressure Chart
Highest permitted working pressure



Coupling System

All the systems secure the coupling and provide complete airtight sealing.

Zip coupling



Steel Ring coupling with metal clamps



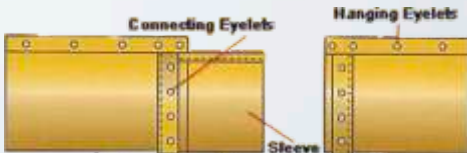
Steel Ring coupling with over-cover metal ring



VELCRO coupling



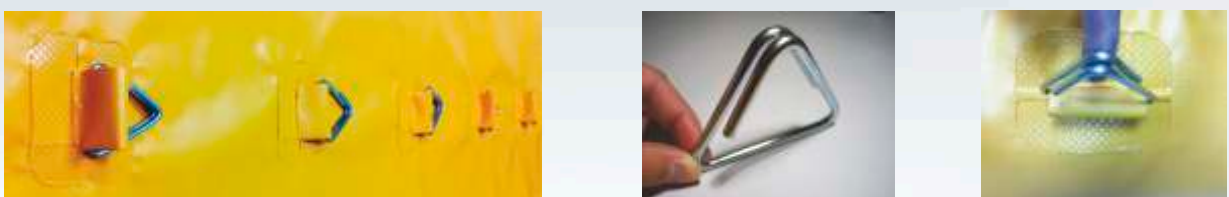
AUSSIE coupling



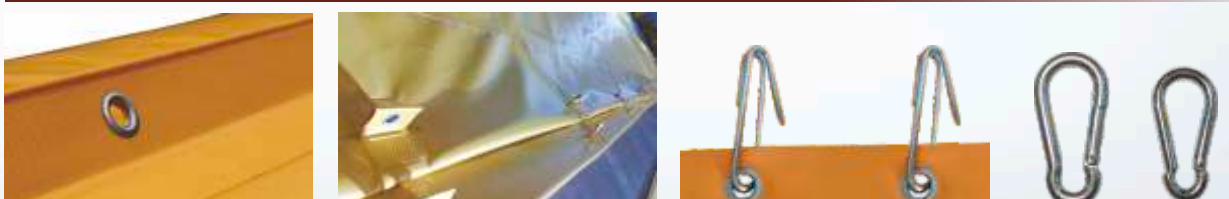
Suspension System



With Triangle type double-locking hooks



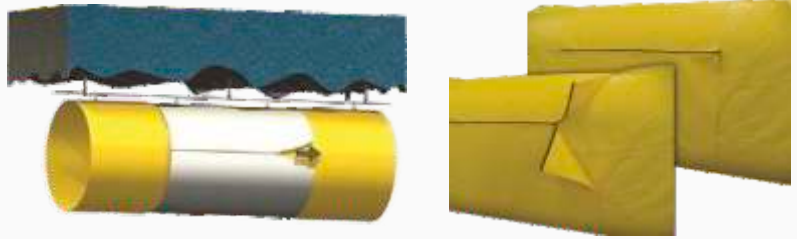
With Metal eyelets



Repair Solutions

Zipper Repair Sleeves

For easy and quick covering the damaged ventilation ducting closing with zipper at the bottom of the duct. Zipper Repair Sleeves can be manufactured on any diameter of Ventilation Ducting.



Zipper Repair Sleeves

MATHELLAS Repair Kit

Includes one set of handheld hot air welder with its silicone roller and pieces of Mathellas750-FR ducting fabric.



Handheld hot air welder



Repair Kit



Repairing the Duct

Packing & Delivery

Packing on shrink wrapped pallets is MatHellas standard export practice. The delivery time of the PO is very short as our daily manufacturing capability is over than 1.000m of normal ducting.





Global presence and service...

Land transportation from source to site...



Sea transportation from source to site...



Cooperating Companies



Representatives - Distributors



MAT HELLAS
VENTILATION DUCTING

MAT HELLAS VENTILATION DUCTING S.A

KOMPOTI ARTAS / ARTA / GREECE

POSTAL CODE: 47040 / P.O.BOX: 416

Tel. : (+30) 26810 26455

Fax : (+30) 26810 26460

Skype: mathellas

E-mail: info@mathellas.com

Web: www.mathellas.com

MatHellas-Ventilation-Ducting

MATHELLAS